

The Stellar

# Lift & Slide door

Discover star quality



stellar<sup>TM</sup>  
ALUMINIUM SYSTEMS

# Stellar

The Stellar Lift & Slide door is part of the multi-award winning Stellar aluminium window and door system from Epwin Window Systems, the UK's largest systems house.

Designed and manufactured in Britain, Stellar provides the best aluminium window and door products for today's discerning homeowners especially in the premium-end of the domestic market. Everywhere you look, there are quality innovative features and intelligent design protocols that make Stellar straightforward to fit and beautiful to live with.

Quite simply, Stellar is the future of aluminium windows and doors.



02



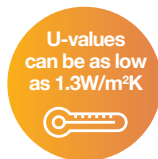
# The beauty and intelligence of a **Lift & Slide door**

When you want to put all the attention on the view and create a dramatic style statement, the Stellar Aluminium Lift & Slide door is the answer.

It gives you two huge panels of glass up to three metres wide with an slimmer interlock of 50mm. It gives you impressively uninterrupted views and the clean, simple lines that are the hallmarks of modern interiors. And when the door is open, you get near 50% clear opening.

## **Intelligent openings**

The Stellar Aluminium Lift & Slide door is an impressively intelligent door – and it all starts with the multi-functional handle. When you want to open the door, turn the handle. The door panel lifts onto the rollers and reduces friction, so even the widest, heaviest sashes will move effortlessly.



# Beautifully practical

Beauty and intelligent design is the perfect combination.

- Lift & Slide technology means even the widest of panes move effortlessly
- A stunning expanse of glass with slim interlocks as small as 50mm lets the glass take centre stage, delivering uninterrupted views
- Different sash widths of between 46.5mm – 92.5mm deliver exceptional choice for all applications
- Multi-functional handle opens the door and lifts it for a practical solution with minimal visual clutter
- Robust security because the door meets the buildings regulations requirement of PAS24:2016 as standard
- Different glazing options, including triple glazing, help keep your home warm in winter and cool in summer
- Unique fitting process means a neater finish where the glazing meets the frame, enhancing the appearance of your door.

The Stellar Knock-in pre-gasketed beads make the job quick, easy and accurate. After fitting Stellar, it's fair to say I won't be fitting anything else.

*Roy Bell*  
Owner R Bell Construction





# Innovatively straightforward to install

Like every product in the Stellar Aluminium range, the Lift & Slide door was designed to be easy to work with and leave a high-end finish every time.

## For example:

- ⌚ The pre-inserted gaskets and patented Knock in beads make it fast and easy to glaze and leave a much neater finish
- ⌚ The finished floor level trim is fast to fit and enhances the end result
- ⌚ The outer frame and sashes are mechanically jointed
- ⌚ The frames do not need to be structurally bonded during manufacture but there's no compromise on the slim sightlines or security credentials.






**Pre-inserted gaskets**




**Neater gasket line**




**Fit faster.  
make more money!**



**PAS24  
as standard**




**Vast Colour Range  
with Marine grade  
as standard**



**Knock in beads  
- fast fitting**




**Less Time  
on Site**



**Contemporary  
slim sightlines**



**Award winning  
system**



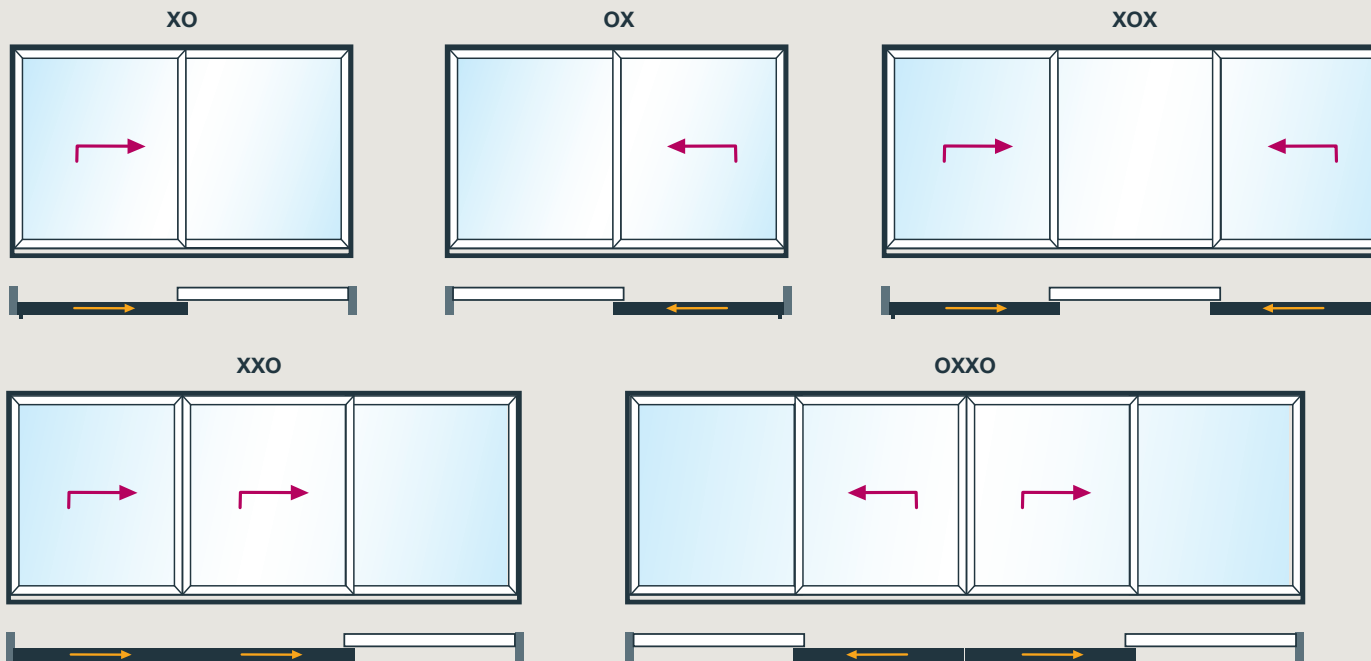
**Easy glide**

# Explore your options

Every Stellar Aluminium Lift & Slide door is a bespoke product.

From the configuration of the door panels to the colour of the frames and handles, every element is tailored to your precise specifications to fit perfectly with any home. You can find out more about your options over the following pages.

## DOOR CONFIGURATIONS



## Dimensions and Configurations

- ⊕ 2, 3 or 4-pane layout
- ⊕ Interlock options 96mm, 68mm or 50mm
- ⊕ Glazing options 28mm, 36mm or 44mm
- ⊕ Sash size – max 3000mm(W) x 2600mm(H)
- ⊕ Max sash weight 300kg
- ⊕ Overall width max 6500mm.



# Protecting the home

Security is an integral part of every Stellar Aluminium Lift & Slide door.

## Security

The Stellar Aluminium Lift & Slide door offers exceptionally high strength and dimensional stability and we use robust hardware combined with multipoint locking on every door. The strength and quality of the security is reflected in the guarantees and accreditations.

The Stellar Aluminium Lift & Slide door comes with a 10 year mechanical performance guarantee. And all approved door handles and hardware are covered by a 10 year mechanical guarantee too for your peace of mind.

The Stellar Aluminium Lift & Slide door is a PAS 24:2016 accredited door and meets Approved Document Q of Building Regulations requirements as standard. It can also be upgraded to meet Secured by Design requirements, the official police security initiative that has the recognised standard for all security products that can deter and reduce crime.

Protecting your home and loved ones is vital. With the Stellar Lift & Slide door, you can be confident you've made a secure choice.

**Secured by Design**



Official Police Security Initiative



# Inspirational colour

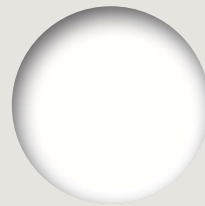
The beauty of aluminium is the range of colours available to you.

The Stellar Aluminium Lift & Slide door available in a standard range of Stellar colours (on reduced lead times) or in any other RAL finish that may be required, including textured finishes and dual colour options.

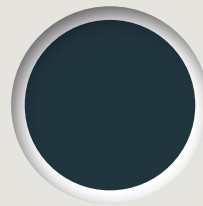
Whether you want your Stellar Aluminium Lift & Slide door to blend in or make a true design statement, the choice is yours.

Stellar offers marine grade finish as standard to ensure outstanding resilience in even the most challenging environments.

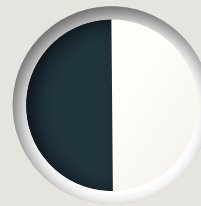
## Stellar colour range



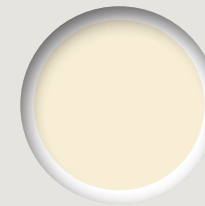
**Signal White**  
Flat/Matt RAL 9003



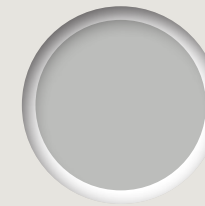
**Anthracite Grey**  
Flat/Matt RAL 7016



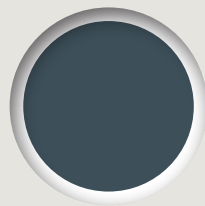
**Anthracite Grey/Signal White**  
Flat/Matt RAL 7016 / 9003



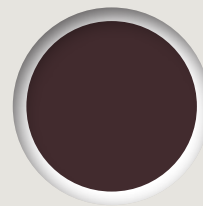
**Cream**  
Flat/Matt RAL 9001



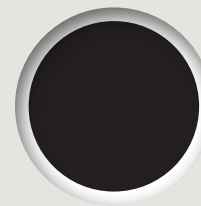
**Agate Grey**  
Flat/Matt RAL 7038



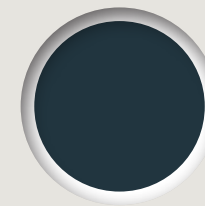
**Slate Grey**  
Flat/Matt RAL 7015



**Chocolate Brown**  
Flat/Matt RAL 8017



**Jet Black**  
Flat/Matt RAL 9005



**Anthracite Grey**  
Textured RAL 7016



## Paint finish guarantee

The Stellar Aluminium Lift & Slide door comes with a 25-year guarantee that covers the coated aluminium against:

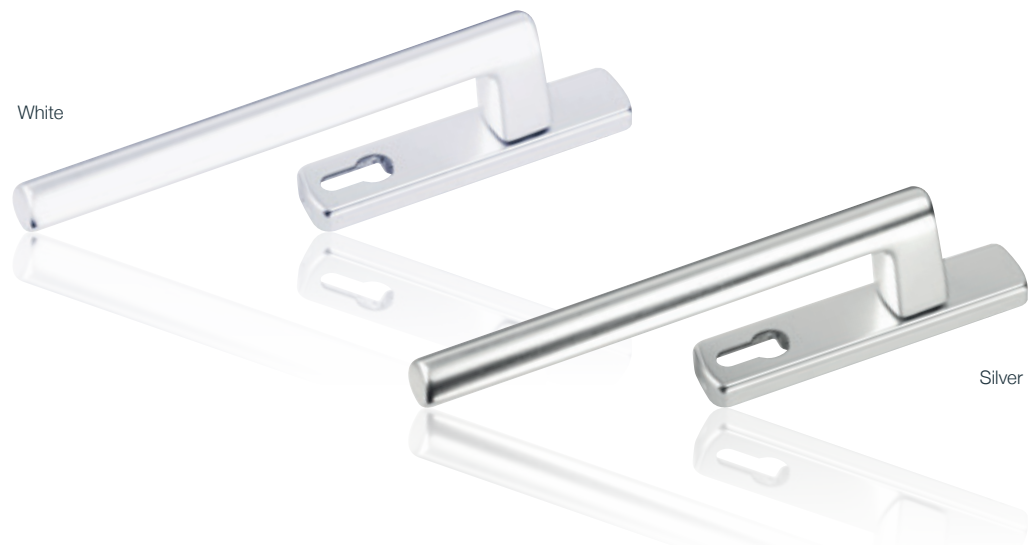
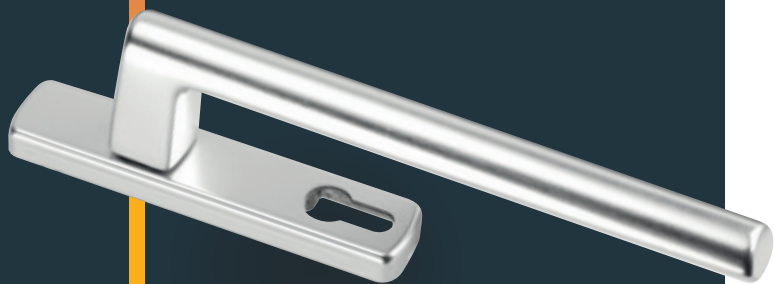
- ④ Peeling, powdering and blistering
- ④ corrosion, except due to bending or folding after the application of the paint
- ④ chalking, fading and loss of sheen
- ④ filiform corrosion.

# Accessory perfection

## Door Furniture

Door furniture on the Stellar Aluminium Lift & Slide door has been carefully considered to beautifully complement the door and give consistent styling with the other products in the Stellar window and door range.

Finishes have been selected for scratch resistance and durability and we only source from the most reputable suppliers so you can be sure every element is robust and reliable.



The Lift & Slide handles are equipped with a night vent function as standard that is simply selectable via the handle. Hence, a healthy indoor environment is provided with an air exchange of up to 265 m<sup>3</sup>/h conveniently and without annoying draughts.

## Thresholds

The Stellar Aluminium Lift & Slide door has a range of threshold options. Choose a system set into the floor for a seamless transition between inside and outside. Choose a system designed for easy wheelchair access if required. For exposed locations there are deeper thresholds that have been developed to channel water away from the home.

All our cills are integrated to provide reliable drainage and are easy to install because there are no concealed preps to consider.





# A truly **British** heritage

Stellar is produced by Epwin Window Systems, the UK's largest systems house with a track record stretching back over 40 years.

Our products are designed and manufactured in Britain for the British market. We only work with trusted and reliable window and door fabricators and are active in trade and industry bodies, taking a leading stance in environmental initiatives.

At Epwin we firmly believe in continuous investment in our production facilities and our quality management systems.

You see this commitment in action in our multi-million-pound Stellar manufacturing facility, which was purposely designed to achieve state of the art manufacturing and superior quality and efficiency.

Stellar is manufactured on the industry's first fully automated thermal break, gasket insertion and packaging line. The line delivers all three functions seamlessly and efficiently to deliver reliable quality and rapid turnaround times.



Our powder coating plant uses a chrome-free pre-treatment system, which reinforces our commitment to the environment and exceeds the latest regulatory requirements.

We have exacting quality assurance checks at every stage to ensure our customers have the quality they have a right to expect.

We visually inspect every frame at a distance of one metre, far in excess of the industry standard three metres.

We hold high volumes of stock in specially designed storage facilities in our 300,000 sq ft warehouse and distribution centre to ensure we can always meet customer requirements.

Because when you have raised the bar in aluminium system design, you have to make sure your production facilities reach the same exacting standards. With Stellar, they do.





**stellar**<sup>TM</sup>  
ALUMINIUM SYSTEMS

Stafford Park 6, Telford TF3 3AT

0845 300 9356

talk@stellarialuminium.co.uk

[www.stellarialuminium.co.uk](http://www.stellarialuminium.co.uk)

## Epwin Window Systems

Stellar Aluminium Systems is an aluminium profile system supplied to local independent manufacturers and installers who contract to install windows and doors. Stellar Aluminium cannot be held accountable for manufacture or installation by independent companies. All information in this publication is provided for guidance only and is given in good faith. As it is company policy to continually improve products, methods and materials, changes of specification may be made from time to time without prior notice. This statement does not affect your statutory rights. © Stellar Aluminium Systems. Part of the Epwin Group Plc. STE17436